

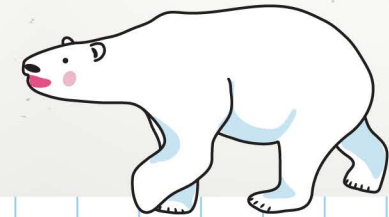


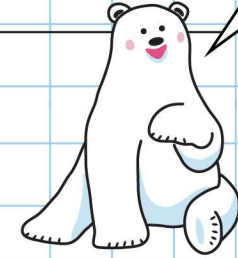
Work Sheet 6:
Control and Mitigation
on Climate Change:
On Low Carbon Lifestyle

-  The Hong Kong Jockey Club Green Gallery
-  Action Pledge Studio

What can individuals do to alleviate climate change?



Recycling is the separation of a waste product into its constituent raw materials, which are then reused to produce other useful materials. Upcycling involves finding a new use for a waste product without recycling it.



Many community organizations are now conducting environmental protection work to support the research being done by scientists. In The Hong Kong Jockey Club Green Gallery, let's explore how communities can work together to combat the threat of climate change.

Hong Kong Green Action

Question 6.1

List three methods that we could adopt to reduce carbon emissions on campus.

1. _____ 2. _____ 3. _____

Waste Management Hierarchy

Question 6.2

Mr Chan has recently been elected as a Councillor for the North Pole District. During the election period and after the celebration party, the following materials are left over:

Suggest a "green election" proposal to Mr Chan, so that he could reduce the quantity of waste that has to be disposed into landfill because of the election and the celebration party.

	publicity banners	posters and leaflets	election T-shirts
This can be:			
This is for:	<input type="checkbox"/> Upcycling <input type="checkbox"/> Recycling	<input type="checkbox"/> Upcycling <input type="checkbox"/> Recycling	<input type="checkbox"/> Upcycling <input type="checkbox"/> Recycling

Action Pledge Studio

Question 6.3

As you walked through this Climate Change Voyage, did you find anything to inspire you? After you finish the voyage, take a photo in the Action Pledge Studio and make a carbon reduction promise. You can obtain the photo through email, share it on social media and call on people to save the Earth together!

My promise is:

At home, I am willing to:

At school, I will:

I will encourage others to:
