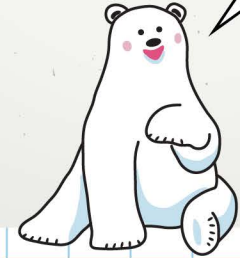


Work Sheet 1:  
Polar Research

- 📍 Xuelong's cabin
- 📍 'Arctic Expedition' video

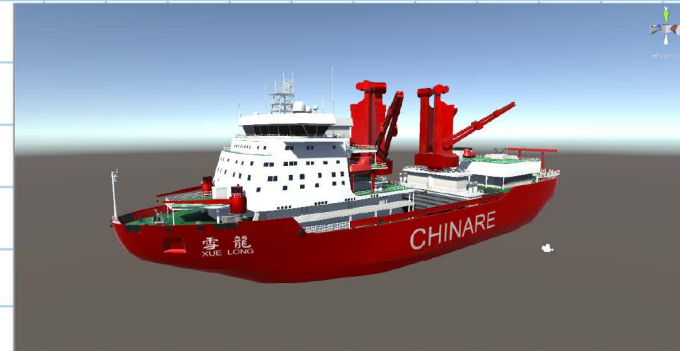
How do scientists evaluate ongoing global climate change through research and observation in the polar regions?



Question 1.1

Xuelong is China's largest \_\_\_\_\_.

- A. submarine
- B. icebreaking polar research vessel
- C. rescue boat
- D. cruise ship



Question 1.2

Draw a line to match each research technique to its objective.

Research:



ice core drilling



trawling



releasing weather balloons



sea floor drilling with gravity corer

Objectives:

to collect deep sea muds and sediments for greenhouse gas contents analysis and to evaluate ongoing climate change in the region

to collect air and atmospheric information for local gas composition analysis

to collect live samples of marine organisms and estimate changes in species quantity

to review gas data from different ages extracted from snow samples and to analyse changing greenhouse gas content in the polar regions